

# TwinTec Ride-on *A Serious Workhorse*

A more user friendly ride on scrubber dryer would be hard to find. Designed to provide long, simple and reliable service day in day out whatever the environment.

The TRO650 is based on the well established engineering of the Vario TTV678 model but simplified to provide a truly professional, cost effective workhorse. You can vary the water flow and the operating speed to suit a whole host of conditions from big areas lightly soiled to heavy duty scrubbing in more arduous conditions.



TRO650



Easy brush access

The TRO650 is blessed with a commanding operator driving position, front wheel traction drive, a magnificent turning circle and one pass performance that really will ensure you get the standard you want, exactly when you want it... and fast.

## ...A Serious Two Brush Workhorse

- Twin Brush**  
 650 twin brush power head cleaning system.
- Easy Brush Access**  
 Easy side access to brushes for maintenance.
- Controlled Cleaning**  
 Fully adjustable water flow rate.
- On Board Charging**  
 Easy and convenient, just plug and go. Fully sealed low maintenance Gel batteries.
- Simple Operator Control**  
 Full dashboard control with soft touch Nutronic controls.
- Safety Features**  
 Emergency stop button, power off removable key, horn button and hazard warning light and built in reversing alarm are just a few of the many safety features included.
- Easy Maintenance**  
 Easy access to batteries and fuses for maintenance.



Full control dashboard

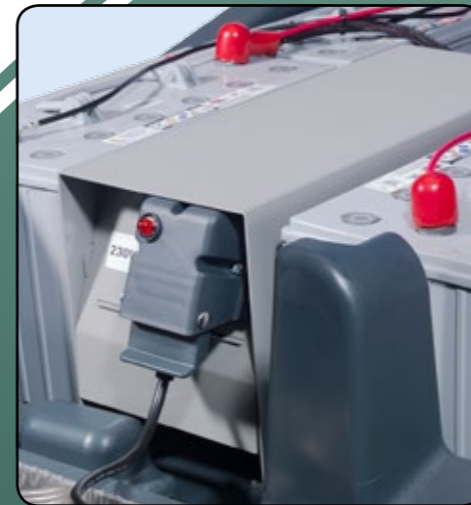


Drive wheel protector

A full 120 litre capacity with a fixed 650mm twin brush power head the TRO650 is ready to go.



Easy maintenance access



Onboard charging



TRO Aluminium / Polyurethane floor tool



Model	Brush Motor	Vac Motor	Power	Run Time	Traction Drive	Drive Speed	Cleaning Speed
TRO650	2 x 400W	400W	4 x 12V (24V) = 200Ahr	3.5 Hrs	600W	0-7.0km/h	3.5km/h
Scrub Width	Brush Speed	Water Capacity	Water Flow Rate	Climbing Gradient	Weight	Dimensions (WxLxH)	
650	200rpm	120L	3, 2, 1, 0.5L/min	11%	365kgs	944x1676x1425mm	