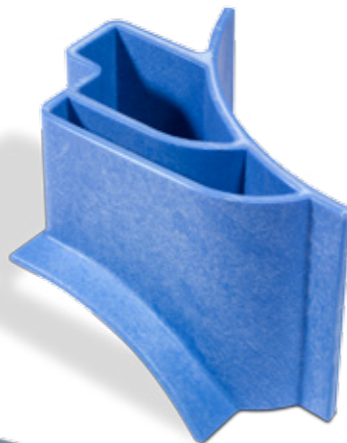


# CleanTec CT570, CTD570

The 570 series has become the most popular contractors' extraction cleaner by choice... and this is not by chance, but by design.

The Structofoam 570 is available in both one and two-motored models built to the full TwinFlo specification and incorporating our Powerflo' pump and quick connect liquid system. The containers are also full Structofoam incorporating our unique "tank within a tank" system to maintain a compact and usable size.



Heavy duty Structofoam construction

- **All Purpose 4 in 1**  
Dry, Wet, Spray extraction carpet cleaning and upholstery cleaning/ car valeting.
- **Structofoam Construction**  
Heavy duty Structofoam used in both head and body construction.
- **Nucable System**  
Power cables can be changed without the need for an electrical engineer.
- **Professional and Powerful**  
Long life professional TwinFlo bypass motors.
- **Tank within a Tank**  
Simple, clean and efficient. This unique design allows an easy to fill and quick to change system.
- **Full Accessory Kit**  
Supplied with carpet, upholstery cleaning, wet and dry accessories.



Fishtail aluminium injection / extraction system



Upholstery nozzle



CT570  
CTD570

Model	Rated Motor Power	Power	Motor only Airflow	Max Suction H <sub>2</sub> O	Kit	Dry/Wet Capacity	Range	Weight	Size
CT570	1060W	230V AC	49L/sec	2400mm	A41A	23/15L	26.8m	16.2kg	415x415x645mm
CTD570	1060Wx2	50/60Hz	98L/sec			23/15L		18.4kg	

# CleanTec CT900, CTD900

The 900 is our largest machine to incorporate the compact "tank within a tank" design, allowing for use in confined areas.

The 900's come in two models, one-motored or two-motored, both incorporating our TwinFlo bypass motors and integrated Powerflo' pump system. The pump system injects the cleaning solution deep into the carpets in a continuous deep cleaning cycle and these bigger machines will cover an area more than three times that of our smaller machines, without the need for emptying, this is especially important in office blocks and high rise apartment blocks.

- **All Purpose 4 in 1**  
Dry, Wet, Spray extraction carpet cleaning and upholstery cleaning/car valeting.
- **Tank Within a Tank**  
Simple, clean and efficient. This unique design allows an easy to fill and quick to change system.
- **Structofoam Construction**  
Heavy duty Structofoam used in both head and body construction.
- **Easy to Empty**  
The unique tipper system incorporated within the chassis design allows for the machine to be emptied in floor drains or WC's where available.
- **On the Move**  
Large rear wheels provide stability during transportation.
- **Nucable System**  
Power cables can be changed without the need for an electrical engineer.
- **Full Accessory Kit**  
Supplied with carpet, upholstery cleaning, wet and dry accessories.



CT900  
CTD900



Tank within a tank



Upholstery nozzle



Tip empty system

Model	Rated Motor Power	Power	Motor only Airflow	Max Suction H <sub>2</sub> O	Kit	Dry/Wet Capacity	Range	Weight	Size
CT900	1060W	230V AC	49L/sec	2400mm	A41A	40/32L	26.8L	23kg	800x490x880mm
CTD900	1060Wx2	50/60Hz	98L/sec					25.5kg	